

Access via our web page

After you have your account set up, you may log in to Gradespeed on our school's web page at

www.am.dodea.edu/campbell/campbellhs

GradeSpeed Summary

Please notify the school if your email address changes.

If you have any problems with the program, please let us know. We have had great success with this program and hope it continues to work to the advantage of parents, teachers and especially students.

Email any questions about Gradespeed to
FCHSGradeSpeed@am.dodea.edu



Fort Campbell High School

Mr. Dave Witte,
Principal

David.Witte@am.dodea.edu

Ms. Jacquelyn Knox,
Asst. Principal

Jacquelyn.W.Knox@am.dodea.edu

1101 Bastogne Avenue
Fort Campbell, KY
42223

Phone: 931.431.5056

Fax: 931.431.7758

www.am.dodea.edu/campbell/campbellhs



Fort Campbell High School

Parent & Student Connection to GradeSpeed

GradeSpeed will give parents and students online access to their student's grades and attendance from anywhere in the world you have internet access.

Parents - follow the directions inside this brochure to set up your account.

Student Connection

Students will use the following link for GradeSpeed-
<https://dodusa.gradespeed.net/pc/studentlogin.aspx>

Students will log in using their school network login name and password. All students will have an account within 2 days after enrollment. The school's website has a link to the Student connection web address.

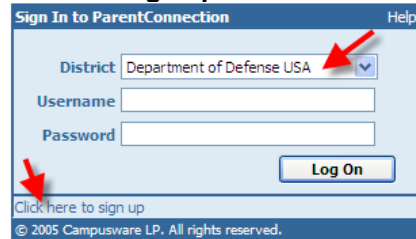
GradeSpeed for Parents

Creating Your Parent Account:

Go to <http://dodea.gradespeed.net>
Click **Parent**



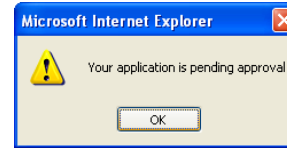
Change the dropdown to **USA**
Click the link in the lower left corner **to sign up**.



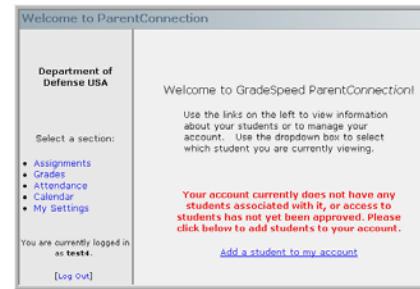
Fill in the blanks. The username and password is what you will use each time you log into GradeSpeed. Email address is very important.
Click Sign Up.



Click OK



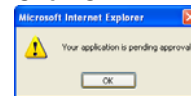
Click the "Add a Student" Link



Use student's legal name and Birthday. Click Submit.



Click OK

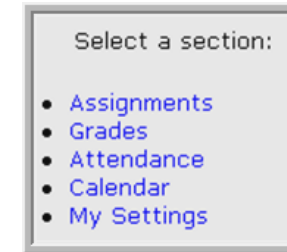


Log off and wait a full work day for your account to be approved.

After the account is approved, go to <http://dodea.gradespeed.net>, click Parent and log in.

After you are Approved

You can access the following features within your account by clicking the links found on the left of the screen.



- **Assignments** – Shows Upcoming or Recent assignments
- **Grades** - click to view the current grade average in each class. Click the individual letter grade link to view the assignments associated with that grade.
 - You may email the teacher from this screen by clicking the teacher's name link.
- **Attendance** - click to view attendance information for your Student.
- **Calendar** - click to view attendance and school dates
- **My Settings** - click to edit the parent account information (name, address, email, change password, etc.)

Teachers update grades about once a week.

Expect to get occasional emails from teachers containing progress reports.